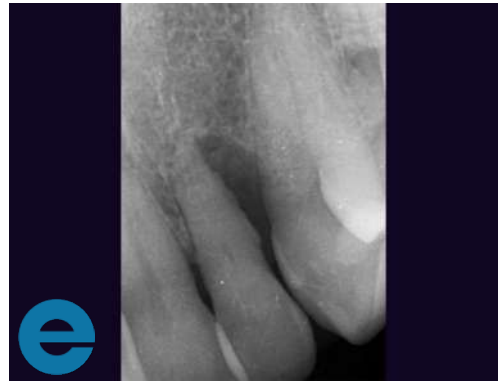


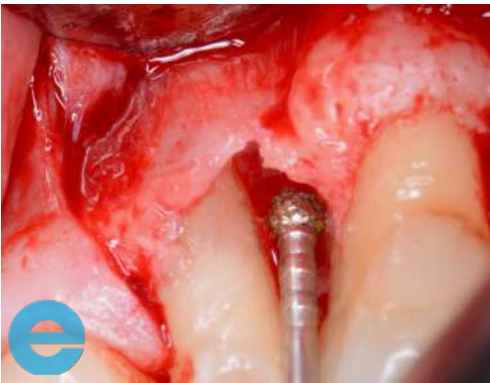
PERIODONTAL GRAFTING



1. Probing showed a 8mm distal pocket



2. Radiograph shows large distal bone loss to the apex of the tooth, which is grade 3 mobile



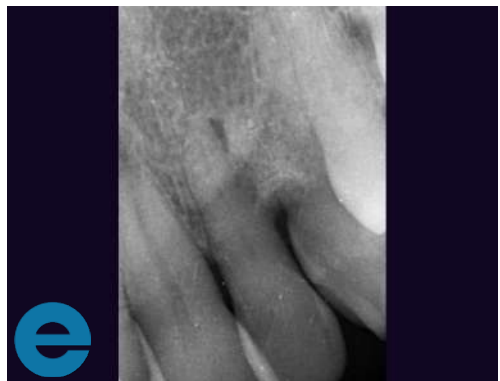
3. Flap is raised and bone defect was cleaned with EthOss® Degranulation Burs



4. Site grafted with EthOss bone grafting material



5. Flap is sutured closed

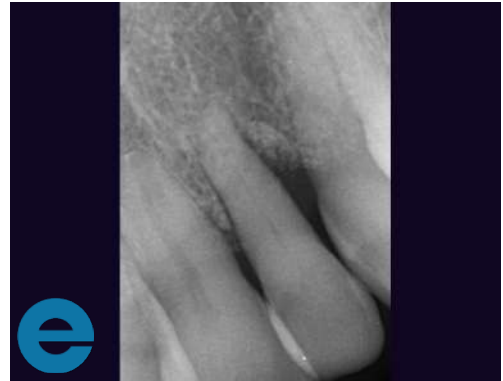


6. Radiograph showing site now grafted with EthOss bone grafting material

PERIODONTAL GRAFTING



7. Loaded at 4 months - very solid but consideration around whether a better flap design could have improved soft tissue



8. Loaded at 4 months - radiograph showing new bone regeneration



GROW STRONGER[®]

USEFUL RESOURCES

RECOMMENDED CLINICAL PROTOCOL

Clinical study showcasing recommended clinical protocol for EthOss bone grafting material

[Download](#)

SURGICAL GUIDELINES

The official recommended guide on how to use EthOss bone grafting material

[Download](#)

HOW TO MIX ETHOSS BONE GRAFTING MATERIAL

Explainer video

[Watch](#)