

# UPPER PRE-MOLAR CASE STUDY



1. Failing 24 & 25 with chronic apical granulomas.



2. Buccal profile view.



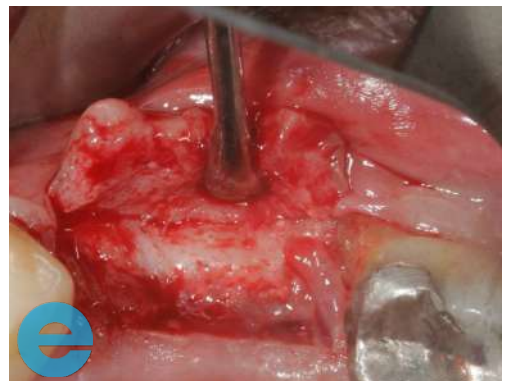
3. Upon removal of teeth, buccal plate non existent at UL4. Type II (ITI) approach with re-entry after 4 weeks. Granulation tissue removed down to solid bone.



4. Implants placed.

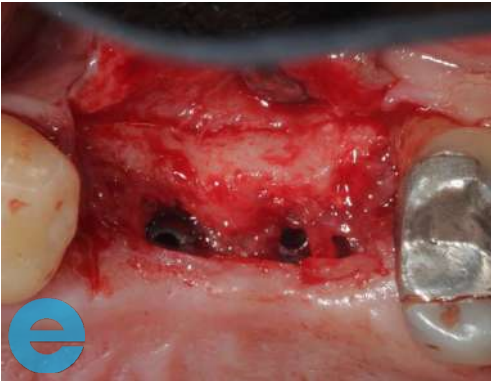


5. EthOss® placed and, in this case, over contoured both buccally and vertically.

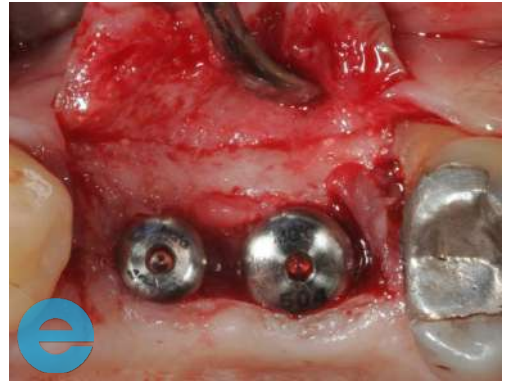


6. Site exposed at 12 weeks. New bone grown over the top of the cover screws where the EthOss® was over contoured.

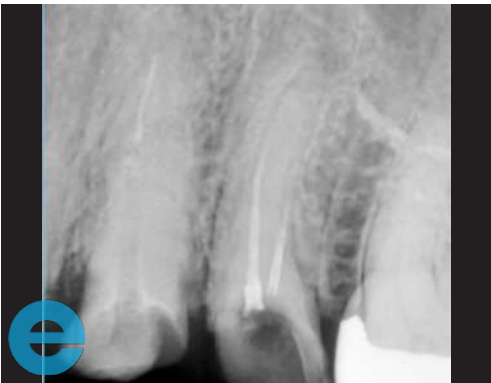
# UPPER PRE-MOLAR CASE STUDY



7. Site after bone removal to reveal implant cover screws.



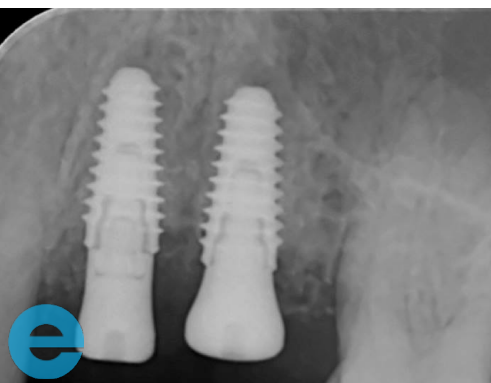
8. 4mm high healing abutments fitted. Image clearly shows a significant improvement in buccal bone width and profile.



9. Pre-op radiograph.



10. Immediate post-op radiograph.



11. Significant changes to bone density evident post-operatively (20 weeks).



# GROW STRONGER

## USEFUL RESOURCES

### RECOMMENDED CLINICAL PROTOCOL

*Clinical study showcasing recommended clinical protocol for EthOss*

Download

### SURGICAL GUIDELINES

*The official recommended guide on how to use EthOss*

Download

### HOW TO MIX ETHOSS

*Explainer video*

Watch